



Responding to perpetrators of domestic abuse

February 2016

RESPECT



**SOCIAL
FINANCE**

Developing a response to perpetrators of domestic abuse – introduction and progress so far

SafeLives,¹ Social Finance² and Respect³ are working together to develop a sustainable, national response to perpetrators of domestic abuse. *Our primary aim is to reduce the number of victims of domestic abuse by developing a whole system response that sustainably changes the behaviour of perpetrators.*

We are launching the new service as a pilot in 3 sites (Essex, South Wales and West Sussex).

By addressing perpetrators' behaviour we aim to target those responsible for perpetrating domestic abuse and improve outcomes for victims and children. The key outcomes of our response will be to:

- Reduce the number of serial perpetrators of domestic abuse*
- Reduce the number of repeat and new victims*
- Reduce the harm caused to victims and children*
- More effectively address additional / related harm to children through earlier intervention*

We want to create a response to perpetrators which generates sustainable behaviour change and reduces victim harm.

Partners in developing the response

We are working towards a holistic response to perpetrators of domestic abuse that creates the right kind of system, changes behaviour, or intervenes to disrupt and make the victim safe earlier. Each organisation brings expertise in developing a sustainable and scalable model. Our ambition is to create something that could be scaled nationally.



SafeLives is a national charity dedicated to ending domestic abuse. Previously called Caada, we chose our new name because we're here for one simple reason: to make sure all families are safe.

Our experts find out what works to stop domestic abuse. Then we do everything we can to make sure families everywhere benefit. It works: after getting the right help, more than 60% of victims tell us that the abuse stops.



Respect is the UK membership organisation for work with domestic violence perpetrators, male victims and young people. We have developed standards and accreditation and provide training and support to improve responses to adult's using violence and abuse in intimate relationships. Respect accreditation is the benchmark for the provision of quality interventions with men who use violence against their female partners.

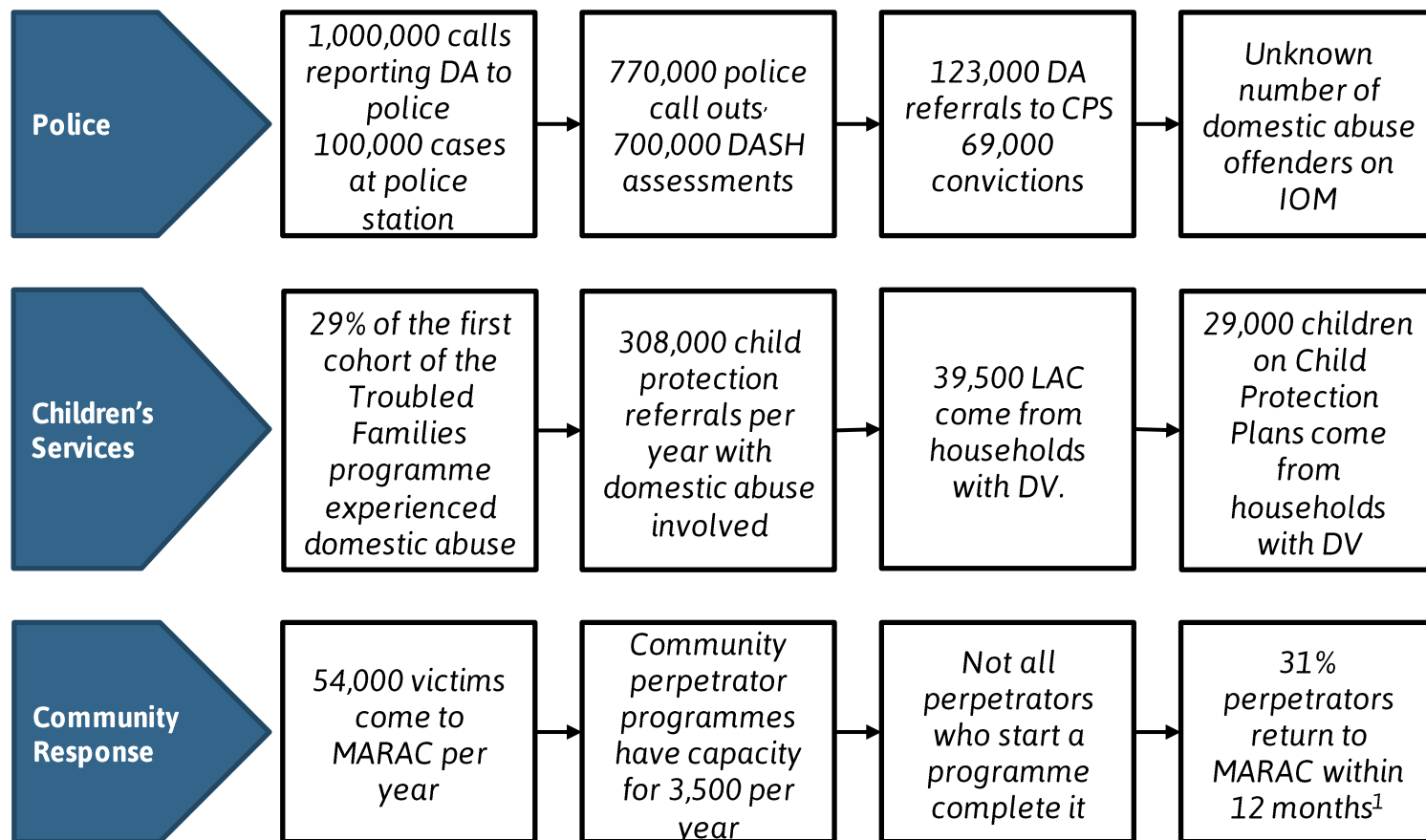


Social Finance is a not for profit organisation that partners with the government, the social sector and the financial community to find better ways of tackling social problems in the UK and beyond. We have raised over £75 million of social investment and designed a series of programmes to tackle social challenges including rehabilitating short sentenced offenders, supporting vulnerable adolescents to avoid being taken into care and helping NEETS access employment.

Our partnership includes expertise in working with victims, perpetrators and developing sustainable responses to entrenched social problems

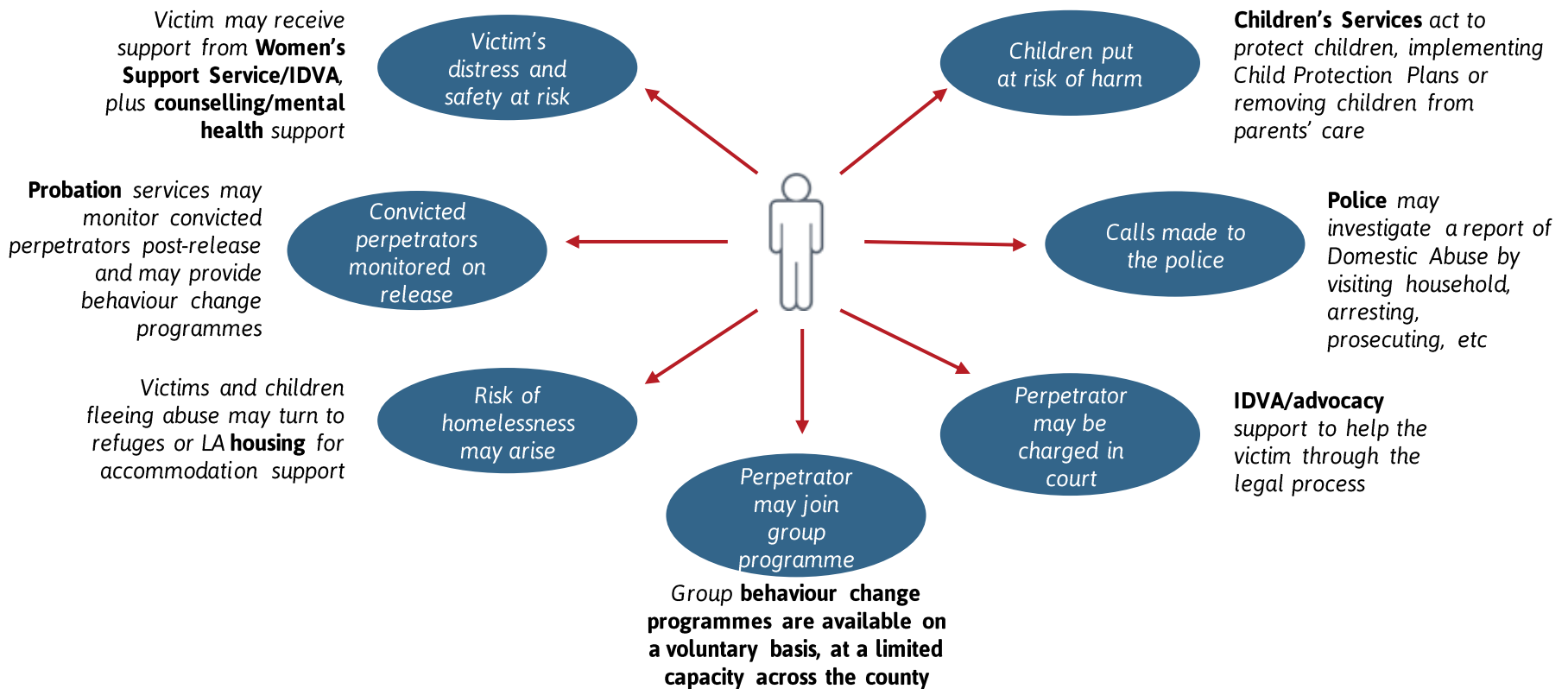
Many perpetrators are missed by existing services

A significant proportion of perpetrators of domestic abuse do not even come into contact with current responses within our society. Of those that do begin a journey through the system, many do not complete the process of behaviour change.



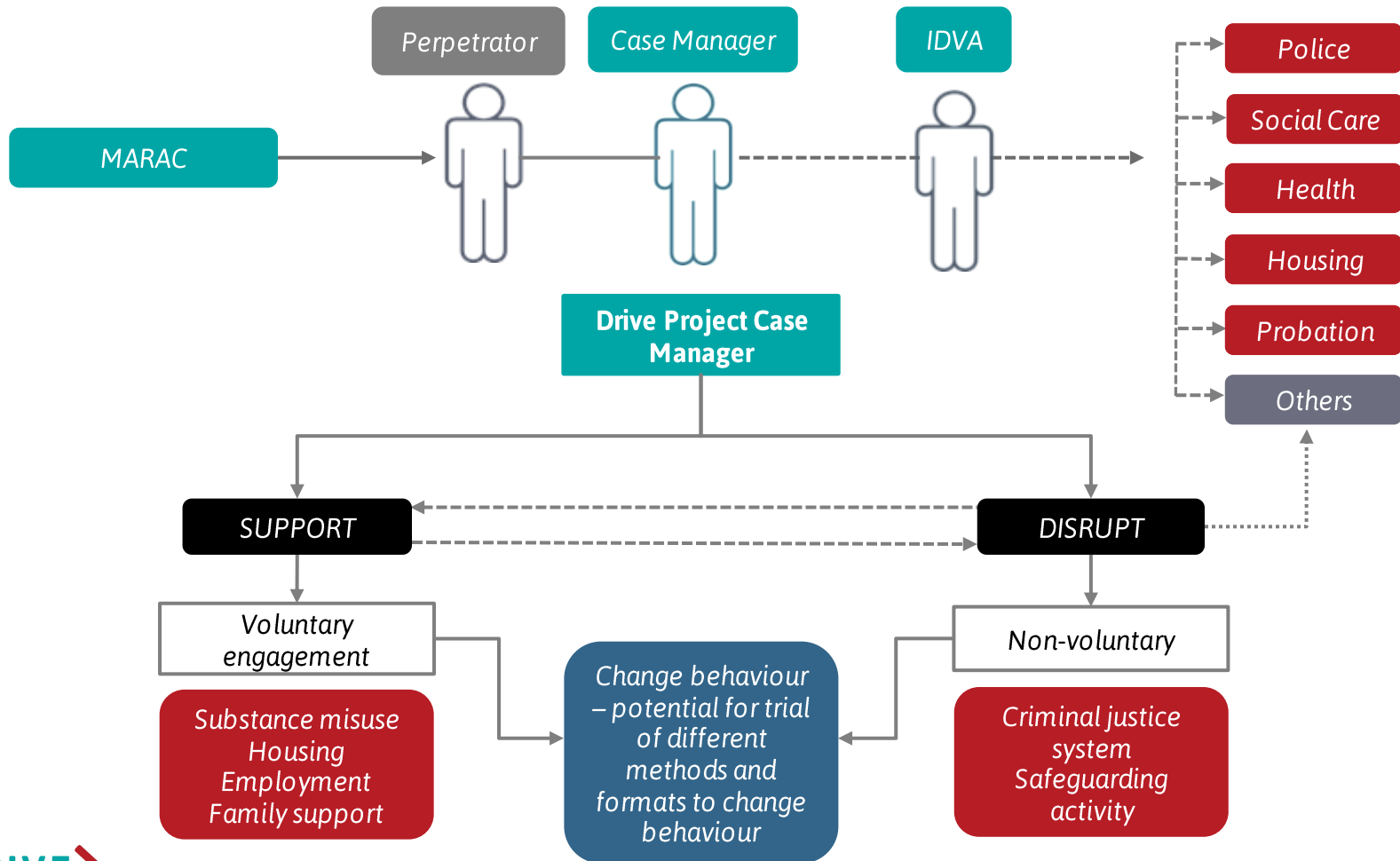
An effective response must enable the system to work together more effectively

Domestic abuse impacts victims' lives in a variety of ways, generating needs that are met by different agencies. These agencies sometimes work independently rather than coordinating their actions; an effective response will therefore support more holistic working.



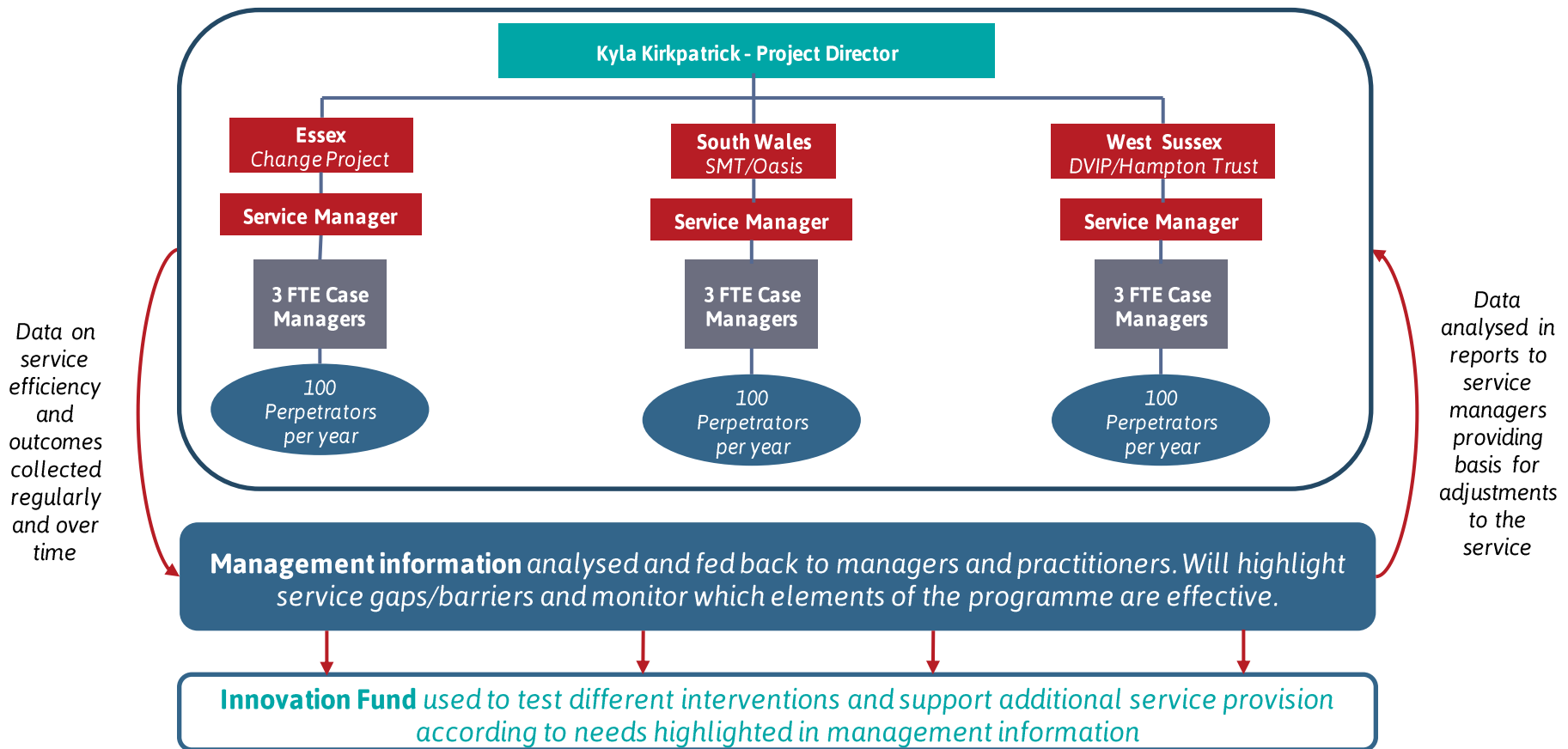
The proposed response – “the drive project”

The Drive Project will coordinate support around the perpetrator to provide the best possible chance of changing behaviour – by providing a holistic package for those committed to change. For those who do not engage, we will provide robust challenge using criminal justice and child protection tools where appropriate.



The model will evolve as we learn what is needed and what works

Management information will be collected from the outset and analysis shared with service staff. It will be used to inform adjustments to the service according to what works.



What would you want from the Drive Project?

What do you think your clients would want from the Drive Project?

Any questions?

- For more information contact:
- Kyla Kirkpatrick - Kyla.Kirkpatrick@safelives.org.uk