



Domestic abuse of older people – a hidden problem

Steve Bartley

(Safeguarding and Access to Justice Programme Lead)




Older People's Commissioner for Wales
Comisiynydd Pobl Hŷn Cymru



Wales (what we do know)

- Population = 3,082,412
- Population aged 60+ = 789,761 (26%)
- Estimated total number of people with dementia in Wales = 43,477
- Estimated total of people with dementia in England & Wales = 850,000





Abuse of older people with Dementia (Global research findings)

- **Higher risk of abuse** (Hansberry et.al. 2005: Cooney et.al. 2006)
- **Prevalence rate of 52 per cent by family caregivers** (Cooper et.al. 2010b)
- **60 per cent of referrals related to sexual abuse where the person had some form of dementia** (Burgess and Philips 2006)
- **Dementia is a substantial risk factor** (Abuse of Older People with Dementia: A Review)



Domestic Homicides

Pensioner jailed for life for double murder of partner and daughter on puppy farm (Daily Express. 31 October 2014)

A double killer who murdered his partner and her daughter at his puppy farm will die behind bars after he was today jailed for life. John Lowe, 82, was told he will spend at least 25 years in jail for the murder of Christine Lee, 66, and her daughter Lucy Lee, 40

Serious case review into death of woman, 81, after alleged attack by husband, 88, recommends more education on issue . (The Guardian, 23 December 2011)

The death of an 81-year-old woman following an alleged assault by her 88-year-old husband has triggered a major inquiry that has lifted the lid on the hidden world of domestic violence among old people. Mary Russell died of a bleed to the brain following a "domestic-related" incident at her home in Leigh-on-Sea, Essex, in October last year. She had made eight 999 calls over the preceding seven months.

Death of Sunderland pensioner May Stokoe 'could have been prevented' says report (Chronicle Live 3 September 2014)

A pensioner's death at the hands of her husband could have been prevented had signs of domestic violence been investigated, a report says. May Stokoe, 79, was stabbed to death at her home by husband James. He then killed himself in the back bedroom of the family home they had shared for 48 years. Retired blacksmith Mr Stokoe, 79, suffered mental health problems and had attempted suicide in March last year, about two months before the couple's deaths. He was receiving daily visits from mental health workers and had been prescribed anti-psychotic drugs, although he had stopped taking them.



Domestic Homicide Reviews

- 2011/12 – 122 victims (16 aged over 60 = 13.1%)
- 2012/13 – 102 victims (16 aged over 60 = 15.7%)
- 2013/14 – 121 victims (26 aged over 60 = 21.3%)

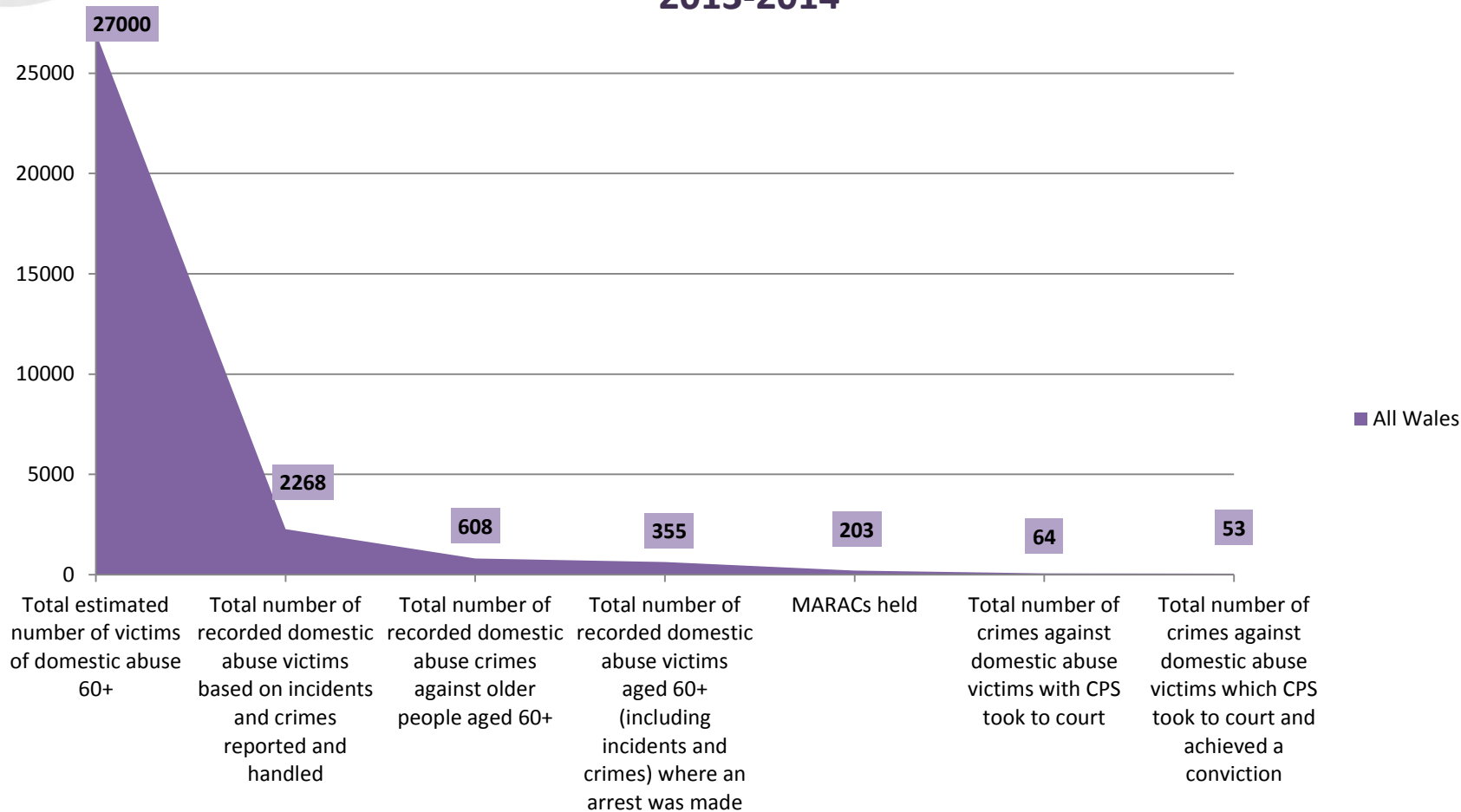
2013/14 (Perpetrator profile)

- (17 of the 26 were aged over 70)
- 21 female victims (11 killed by partner ex-partner, 7 by son or daughter) 3 by other family member (grandchild??)
- 5 male victims (all killed by partner/ ex-partner)




All Wales

Response to domestic abuse against older people 60+ 2013-2014



Older People's Commissioner for Wales
Comisiynydd Pobl Hŷn Cymru



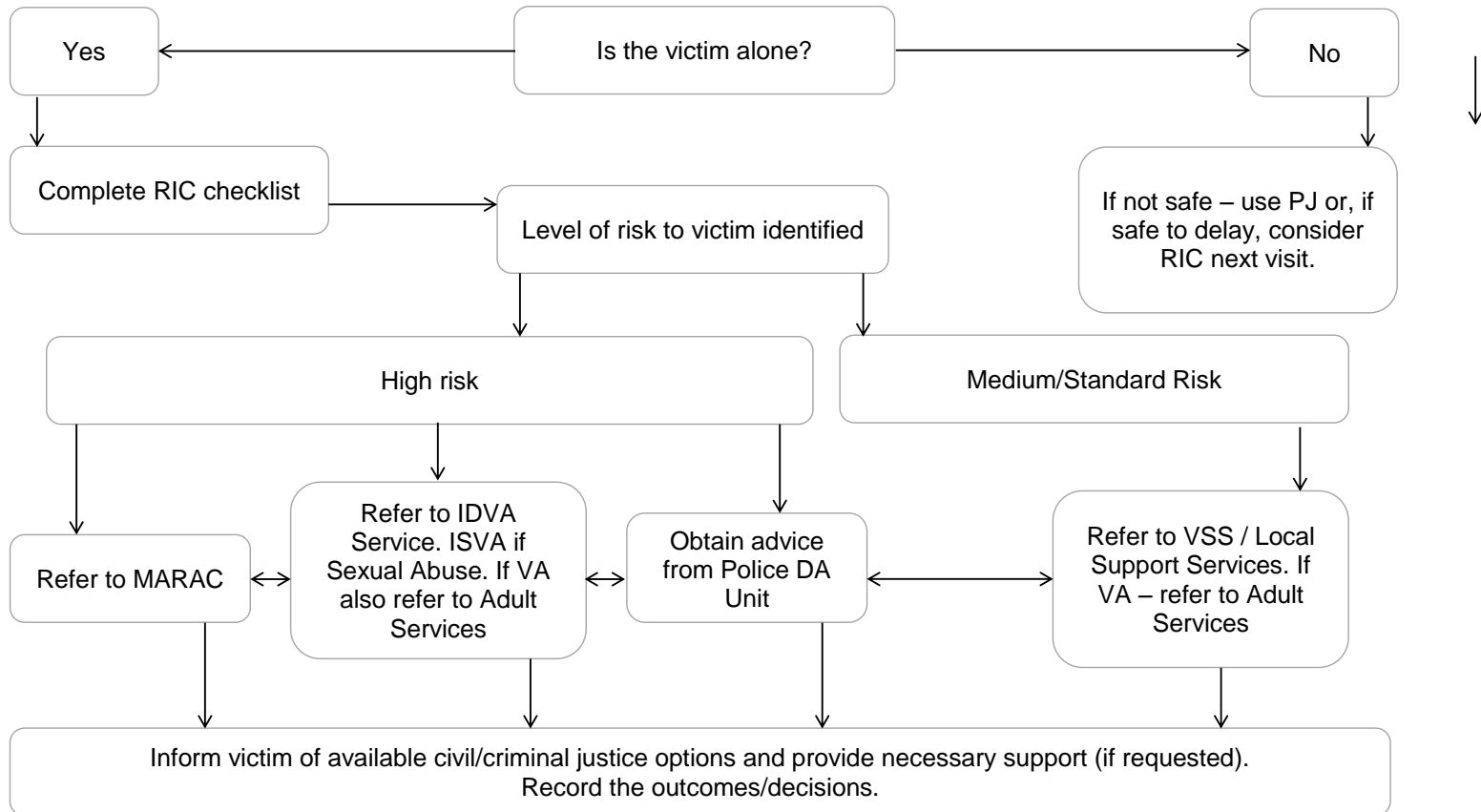
Most effective guiding principles for working with older people who need to be safeguarded

- Empowerment
- Prevention
- Protection
- Proportionate responses
- Partnership working
- Appropriate, accessible specialist support

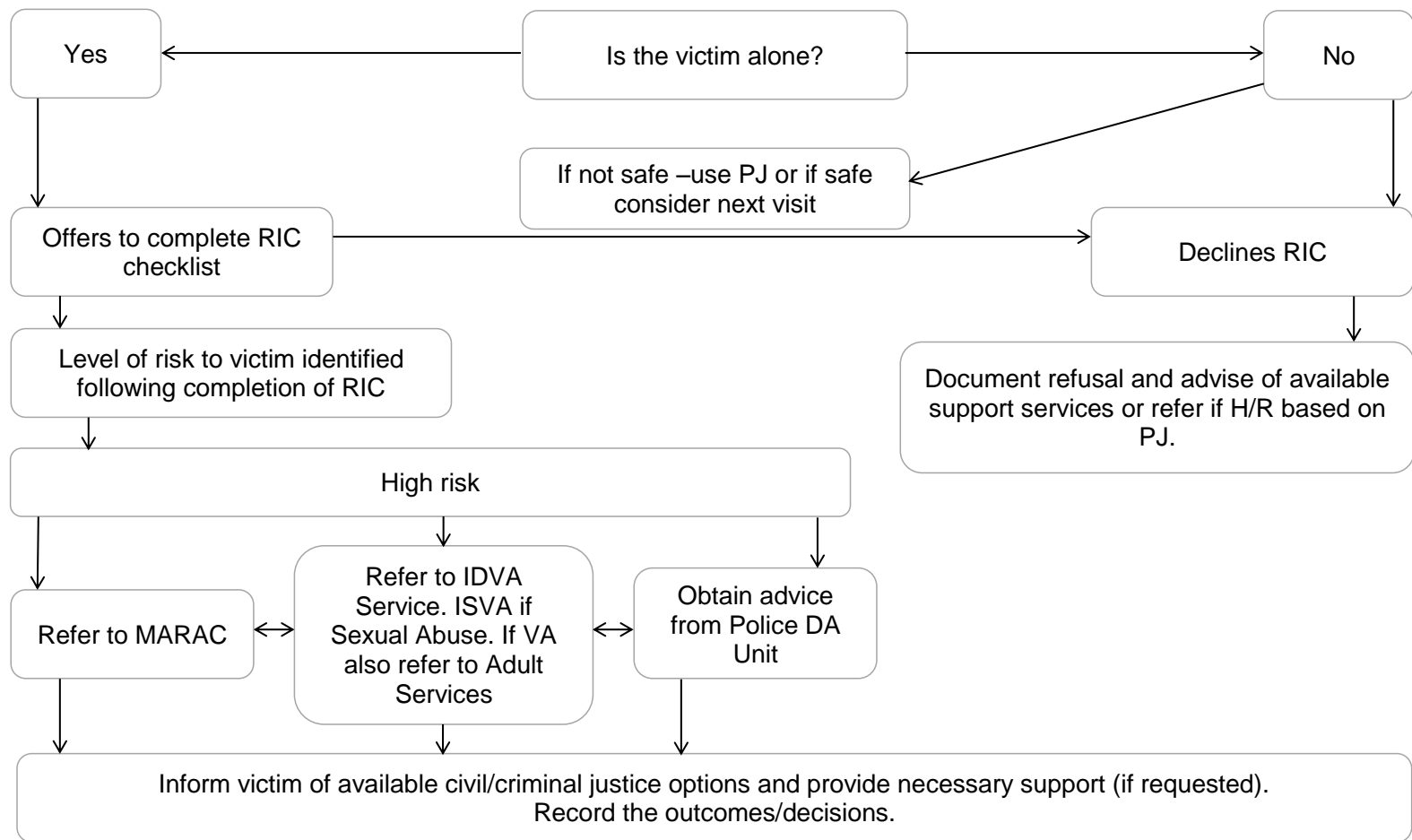


Older People's Commissioner for Wales
Comisiynydd Pobl Hŷn Cymru

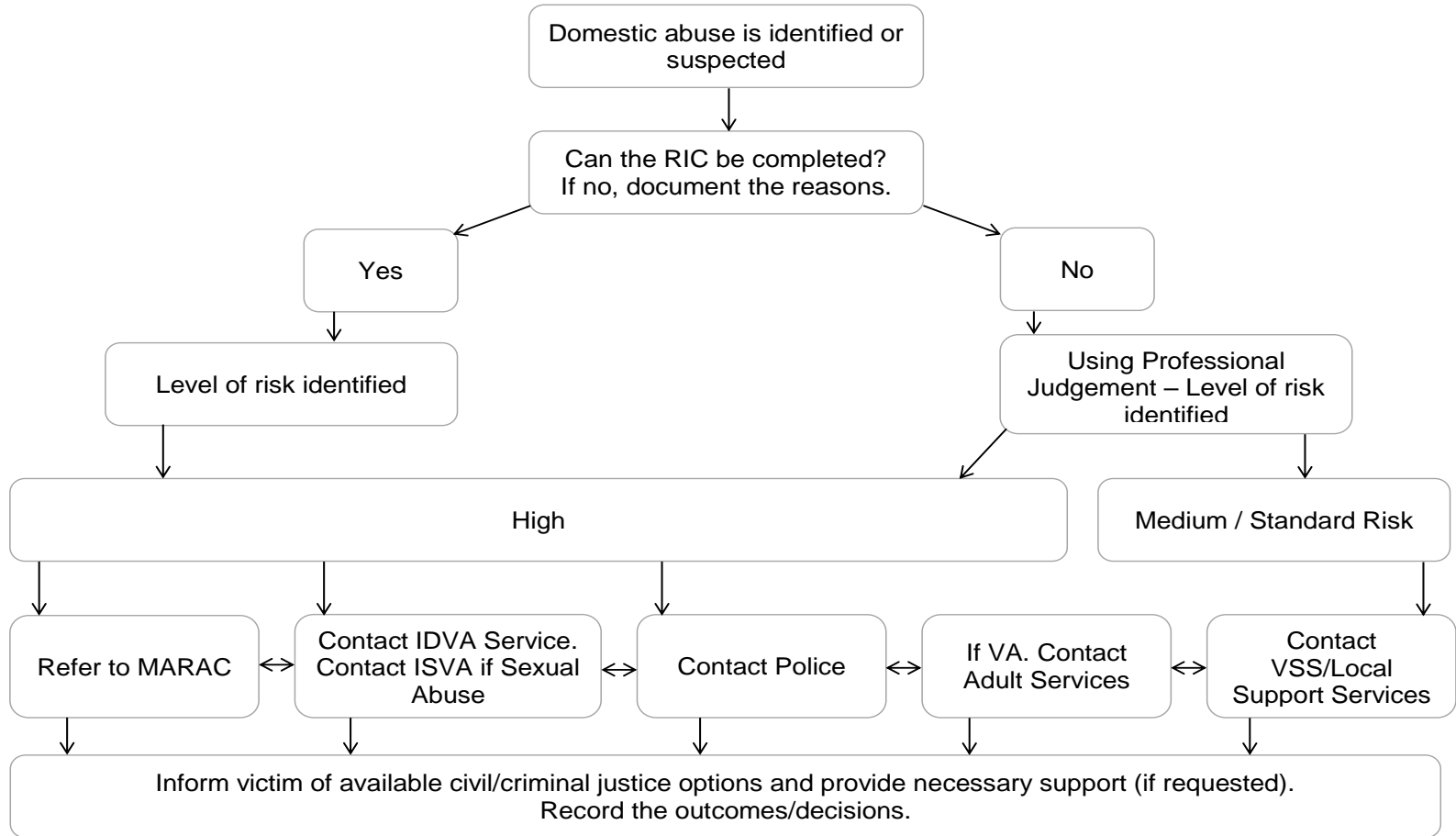
'Access to justice pilot for older vulnerable people'
 Domestic Abuse Referral Pathway following disclosure of abuse
 (Victim has capacity **and gives** consent to share information)



'Access to justice pilot for older vulnerable people'
 Domestic Abuse Referral Pathway following disclosure of abuse
 (Victim has capacity and **does not** consent to share information)



'Access to justice pilot for older vulnerable people'
 Domestic Abuse Referral Pathway following disclosure of abuse
 (Victim does not have mental capacity to give consent to share information)





Access to Justice Pilot (2011) - Swansea

- 152 incidents: 131 victims. 95 female. 36 male. (ages ranged 55-91 years) one-third had a disability.
- Perpetrators: 109 male, 44 female
- 10 cases lacked mental capacity (IMCA involvement not considered/too late)
- In two-thirds of relevant cases, criminal justice or civil justice options were not discussed with victims
- 10 cases referred to MARAC
- Better outcomes where pathway was followed





Access to Justice (Continued)

- In at least 30 cases, given the gravity of the incident recorded, the level of risk recorded was less than one might expect. It was felt that the DASH RIC needed to be slightly adapted to meet the needs of older victims
- 10 cases referred to MARAC (there were none the previous year)





Aberystwyth University: Study into Adult Protection, Domestic Abuse and Hate Crime: Key Recommendations

- Training on domestic abuse for professionals to include use of the Risk Indicator Checklist [RIC], Multi-Agency Risk assessment Conference [MARAC] and Independent Domestic Violence Advocate [IDVA] processes
- More accurate and sophisticated detection and recording of domestic violence cases involving older people
- Improved data collection, case management and decision making recording
- Facilitate client involvement at each stage of the process
- Increase the use of advocate; IDVA's, IMCA's to ensure that the voices of the most vulnerable are heard



Older People's Commissioner for Wales
Comisiynydd Pobl Hŷn Cymru



Thank you/Diolch

Contact details:

Steve Bartley

Safeguarding and Access to Justice Programme Lead/Arweinydd y Rhaglen Diogelu a Mynediad at Gyfiawnder

Older People's Commissioner for Wales/Comisiynydd Pobl Hŷn Cymru

Cambrian Buildings/ Adeiladau Cambrian

Mount Stuart Square/ Sgwâr Mount Stuart

Cardiff /Caerdydd,

CF10 5FL

Tel/Ffôn: 08442 64 06 70

Steve.bartley@olderpeoplewales.com



Older People's Commissioner for Wales
Comisiynydd Pobl Hŷn Cymru