



Essex , Southend & Thurrock Independent Domestic Violence Advisor (IDVA) service

Market Engagement Event
9th October 2014

Domestic Abuse

History and challenge the victims, perpetrators and public sector

14,000 children experiencing severe domestic abuse before they reach 16

Stanley 2011

29,000 police incidents/year
17,000 victims (10% high risk)

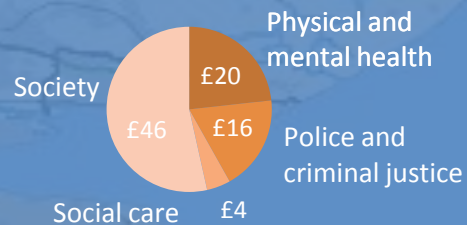
44,000 victims/year

Walby 2009

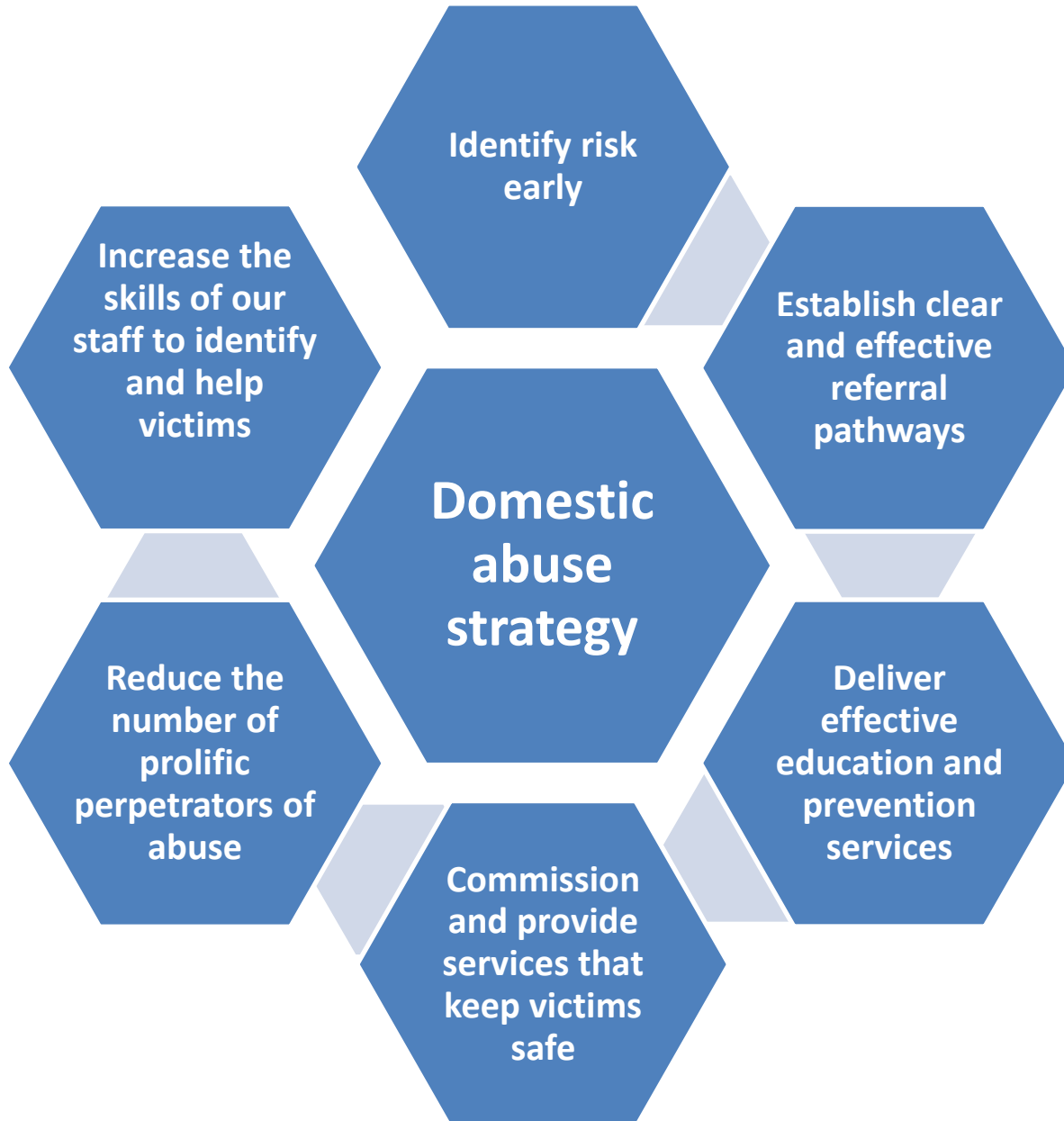
Domestic Homicides

2011	2012	2013
4	6	2

Estimated annual cost of domestic abuse in Essex £86m by sector



Domestic Abuse

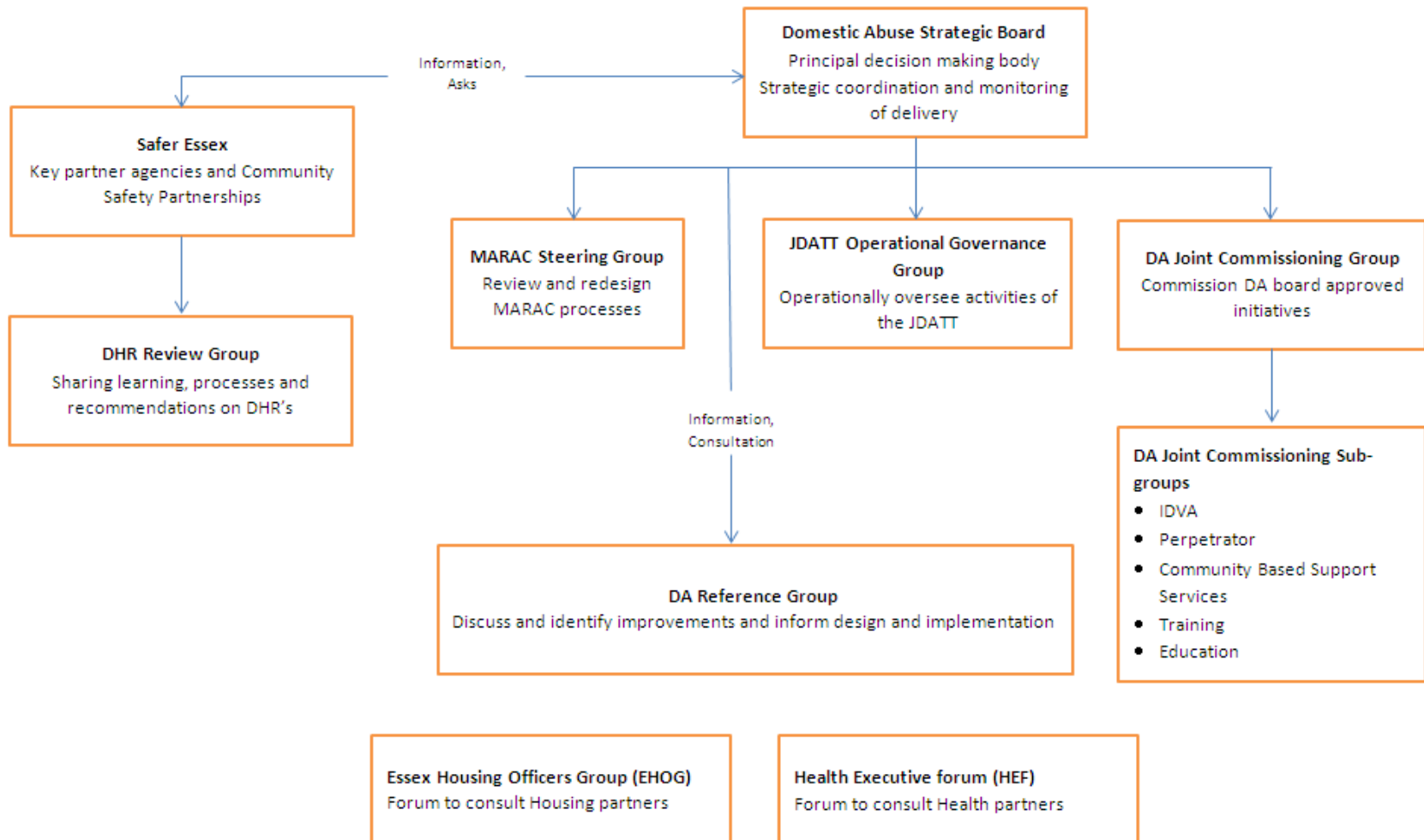




Partners involved

- Office of the Police & Crime Commissioner for Essex (Lead Commissioner)
- Essex Police
- Southend-on-Sea Borough Council
- Essex County Council
- Thurrock Council
- CCGs
- Essex Community Rehabilitation Company

Essex Domestic Abuse governance / partnership structure





Benefits of a jointly-commissioned service

- Clarity - Clear pathways for victims
- Consistency - Consistent provision across Southend, Essex & Thurrock
- Co-ordination - Better join-up with wider DA system (refuge, community services)
- Consistent evaluation and performance information
- Shared outcomes for commissioners
- Clarity for providers
- Potential for economies of scale



Existing IDVA service in Essex

Current resources:

5.5 contracted IDVAs provided by Victim Support

6 Additional Victim Support IDVAs

4 Safer Places IDVAs

1 Colchester & Tendring Women's Refuge IDVA

1 Basildon Women's Aid IDVA

Multiple funding streams, commissioners, evaluation and monitoring processes and funding terms

In early 2014 DA Strategic Board commissioned CAADA to review the current Essex IDVA service arrangements with a view to making recommendations to inform future commissioning



Scope of the new IDVA service

Provision of intensive one-to-one support to high risk, adult, domestic abuse victims across Essex, Southend & Thurrock from the point of crisis, coordinating multi-agency support and providing practical solutions

See section 2.1 of specification

Out of scope

- Perpetrator support and programmes
- Refuge and accommodation provision
- Support for medium and standard risk victims
- Support for Young victims (under 18)
- Long term support services such as counselling
- Education programmes



Commissioning Outcomes (to be performance-managed within the contract)

- Victims are safer and better resourced to stay safe
- Victims have increased access to justice
- Victims report improved health and wellbeing
- An increased proportion of victim's access community based support services
- Victims and their children are identified early by a wide range of partner agencies
- All identified victims are offered an equal and accessible service that best meets their needs
- Children at risk are identified and referred appropriately



The main purpose of IDVAs is to address the safety of victims at high risk of harm...to secure their safety and the safety of their children.

Serving as a victim's primary point of contact, IDVAs normally work with their clients from the point of crisis to assess the level of risk, discuss the range of suitable options and develop safety plans

The IDVA's role in all multi-agency settings is to keep the victims' perspective and safety at the centre of proceedings



CRITERIA	WEIGHTING
Track Record	5%
Quality & Service Delivery	40%
Business Processes and Administration	5%
Employment of Staff	10%
Delivery of Service	10%
Value Added Service	5%
Cost Breakdown/Value for Money	20%
Consortium Bids/Sub-contracting	5%